



STEC 泰科

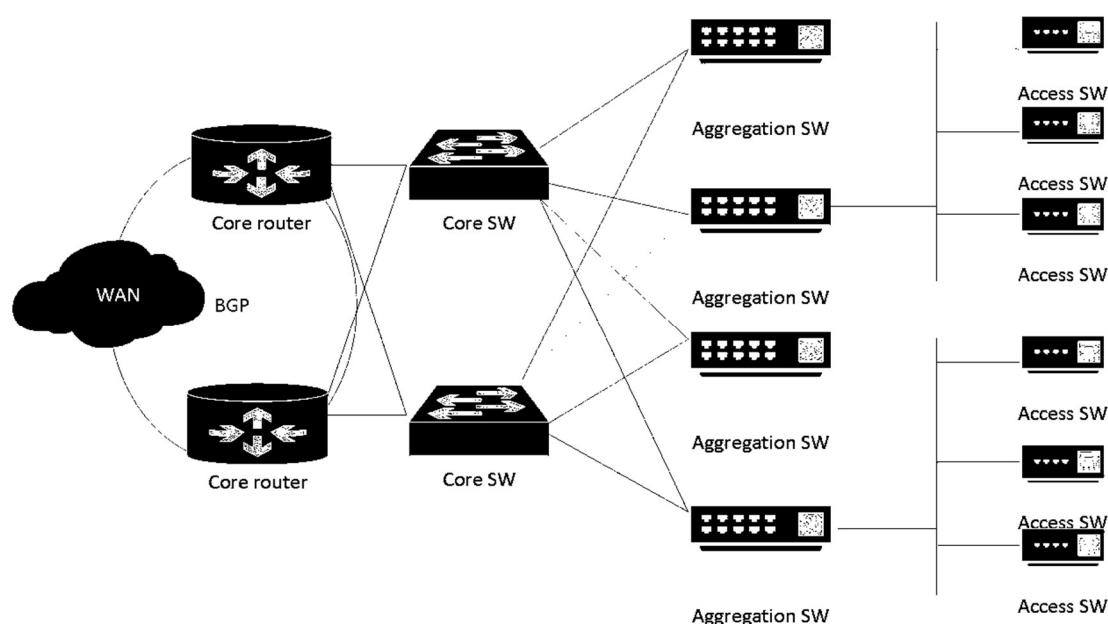
STEC Fiber Networking Solution

STEC Fiber Networking Solution

Overview of the Solution

To bring the network to millions of users, STEC provides you with a fiber networking solution. In the fiber networking, all devices from core routers to access switches are connected.

Topology of the Solution



Description of the Solution

The solution adopts the networking of three layers, including the core router and the switch, the aggregation switch and the access switch. Both the core router and the core switch adopt the two-node backup. The aggregation switch is connected to the two core switches which can work as standby for the other. Therefore, one core switch in trouble has no impact on the network. The core router and the core switch are connected by the 10G optical fiber. The aggregation switch uplinks with the core switch by the 10G optical fiber and downlinks with the access switch by the Gigabit optical fiber.

In the fiber networking, the switch is with ports of 100M in the downlink and with ports of Gigabit in the uplink. The maximum broadband of a single user reaches to 100M.

In the fiber networking, the router is STEC R7600 Series, a carrier level 10G core router. It supports at most 2 slots for the console panel, 8 service slots, key module 1+1 redundancy backup, 10G wire-speed layer 3 forwarding rate.

In the fiber networking, the switch is STEC S8500 Series which support 2 slots for the console panel, 14 service slots, key module 1+1 redundancy backup, 48 Gigabit ports or 12 10G ports in a single board and wire-speed forwarding. It excels in low consumption and energy saving.

In the fiber networking, the aggregation switch adopts STEC S2900 Series, a 10G layer-2 switch. It supports 48 Gigabit ports and 8 10G ports, rich QoS and security policies.

In the fiber networking, the access switch adopts S2200WS Series, a web-smart access switch. It supports 24 100M TX ports and 2 Gigabit combo SFP/TX uplink ports. It also supports functions such as basic VLAN, QoS policy.

Product Models Applied in the Solution

Model	Description
R7610	STEC 7610 core router chassis (10 expanded slots(2 for the control console, 1 1000W AC power supply, support power redundancy, dual power supply(recommended))
S8510	S8510 assembly chassis (include 1 fan disk, 2 power slots, 1 AC 1000W power supply, 2 main console slots, 8 services slots)
S2956	Ethernet switch with 48 Gigabit TX ports and 8 10G optical ports (1 Mini usb Console port, 48 Gigabit TX ports, 8 10G SFP+ ports, AC220V power supply, fanless, 1U height, standard 19-inch rack-mounted installation)
S2224WS-B	Ethernet switch with 24 100M TX ports and 2 Combo Gigabit SFP ports (24 100M TX ports, 2 Gigabit Combo SFP ports; standard AC220V power supply; fanless, 1U height, standard 19-inch rack-mounted installation)